
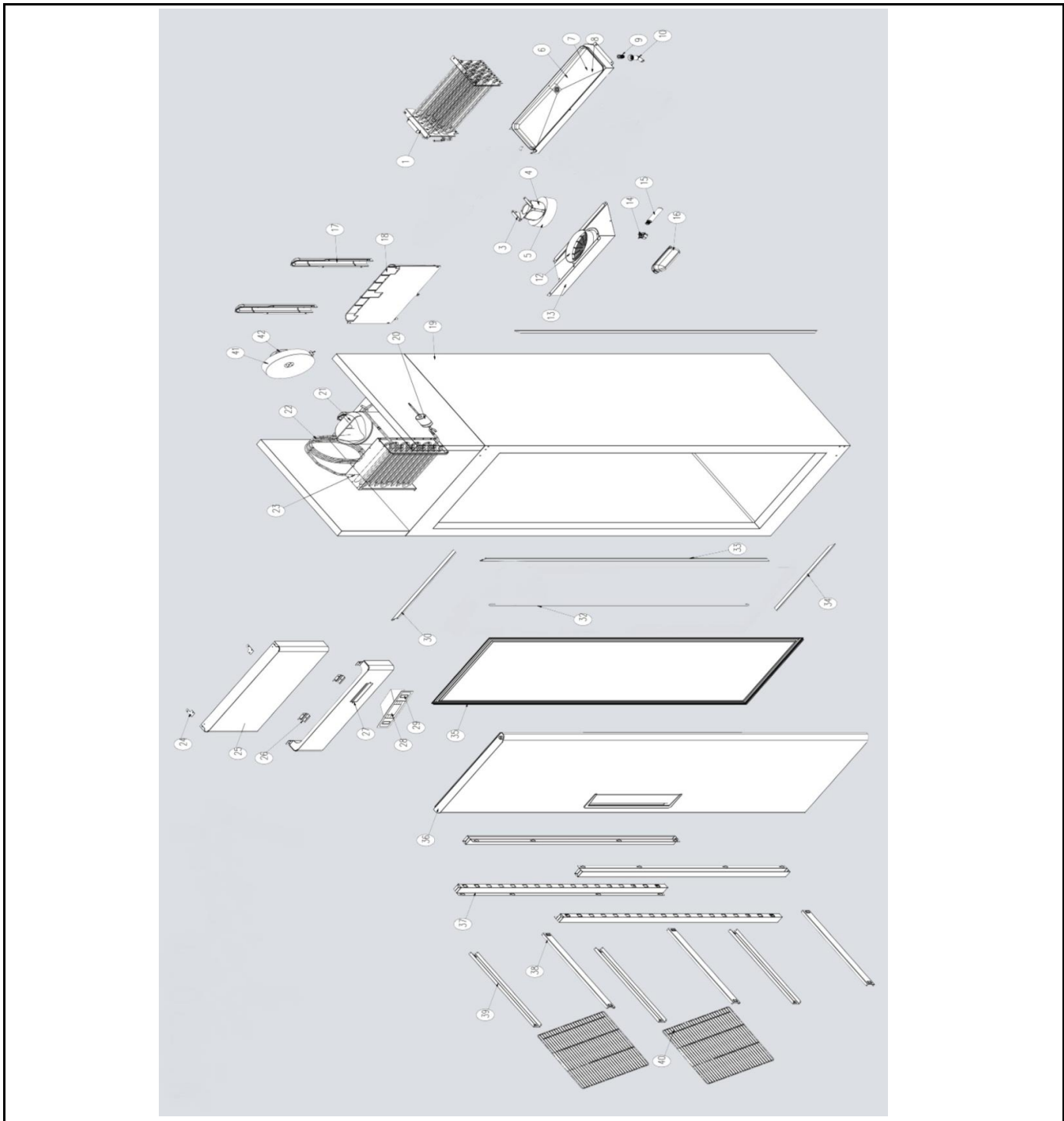



Drawing

 <p>Hendi B.V. Steenoven 21 3911 TX Rhenen The Netherlands</p>	Batch #	Appliance part#
	101031 and up	232132
	Description	
	Freezer 670L Profi Line	

Date	27-09-2016	Revision #	Revision version
Revision	First bill of materials (BOM)		



Bill of materials (BOM)

 HENDI FOOD SERVICE EQUIPMENT Hendi B.V. Steenoven 21 3911 TX Rhenen The Netherlands	Batch #	Appliance part#
	101031 and up	232132
	Description	
Freezer 670L Profi Line		


Date	27-09-2016	Revision #	Revision version
Revision	First bill of materials (BOM)		

Item	Description	Part#	Quantity	Remark	Picture
1	Evaporator 400x220x140mm (freezers)	940990	1		
3	Bracket	n/a	1		
4	Fan motor	941034	1		
5	Fan	n/a	1		
6	Drip tray housing	n/a	1		
7	Drip tray	n/a	1		
8	Rims	n/a	1		
9	Connector	n/a	1		
10	Drip tray outlet	n/a	1		
12	Grid	n/a	1		
13	Cover	n/a	1		
14	Fitting lamp	n/a	1		
15	Lamp 15W	n/a	1	*Obtain locally	
16	Lamp cover	n/a	1		
17	Cover	n/a	2		
18	Drain box	n/a	1		
19	Housing	n/a	1		
20	Drier filter	n/a	1		
21	Compressor (NEK2134GK R404A)	940938	1		
22	Gas line	n/a	1		
23	Condenser	n/a	1		
24	Bracket	n/a	2		
25	Top cover	941560	1		
26	Clips	n/a	3		
27	Bracket	n/a	1		
28	Digital controller Dixell (freezer)	940921	1	Model XR06CX	
29	Switch	205426	1		
30	Liner frame cover (upper)	n/a	1		
32	Spring bar	n/a	1		
33	Liner frame cover (left/right)	n/a	2		
34	Liner frame cover (lower)	n/a	1		
35a	Door gasket 705x1515mm	940952	1		
35b	Door gasket 685x1565mm	940969	1		
36	Complete door assembly	941584	1		
37	Shelf Standard	n/a	4		
38	Shelf holder (right)	nss	3	Available as 936207	
39	Shelf holder (left)	936207	3	Incl item 38 (sold as 1 set 38 and 39)	
40	Shelf GN 2/1	936191	3	Sold per 1pcs	
41	Fan	n/a	1		
42	Fan motor 36W	941010	1		
	Door switch	940976	1	*Not shown on exploded view	
	Power cord	931554	1	*Not shown on exploded view	

n/a -> not available

nss -> not sold separately

Wiring diagram

 HENDI FOOD SERVICE EQUIPMENT Hendi B.V. Steenoven 21 3911 TX Rhenen The Netherlands	Batch #	Appliance part#
	101031 and up	232132
	Description	
	Freezer 670L Profi Line	

Date	27-09-2016	Revision #	Revision version
Revision	First bill of materials (BOM)		

